

# AG3 , AG10, AGR, AGE

EN Instruction Manual

You have purchased a product made by JUNG PUMPEN and with it, therefore, also excellent quality and service. Secure this service by carrying out the installation works in accordance with the instructions, so that our product can perform its task to your complete satisfaction. Please remember that damage caused by incorrect installation or handling will adversely affect the guarantee. Therefore please adhere to the instructions in this manual!

This appliance can be used by children aged 8 years or over and by persons with limited physical, sensory or intellectual capabilities, or with limited experience and knowledge, provided that they are supervised or have been instructed in the safe use of the appliance and are aware of the dangers involved. Children must not be allowed to play with the appliance. Cleaning and user maintenance must not be carried out by children unless they are supervised.

#### Damage prevention in case of failure

Like any other electrical device, this product may fail due to a lack of mains voltage or a technical defect.

If damage (including consequential damage) can occur as a result of product failure, the following precautions can be taken at your discretion:

- Installation of a water level dependent (under circumstances, mains-independent) alarm system, so that the alarm can be heard before damage occurs.
- Inspection of the collecting tank/chamber for tightness up to the top edge before – or at the latest, during – installation or operation of the product.
- Installation of backflow protection for drainage units that can be damaged by wastewater leakage upon product failure.
- Installation of a further product that can compensate in case of failure of the other product (e.g. duplex unit).
- Installation of an emergency power generator.

As these precautions serve to prevent or minimise consequential damage upon product failure, they are to be strictly observed as the manufacturer's guideline – in line with the standard DIN EN specifications as state of the art – when using the product (Higher Regional Court Frankfurt/Main, Ref.: 2 U 205/11, 06/15/2012).

## SAFETY INSTRUCTIONS

This instruction manual contains essential information that must be observed during installation, operation and servicing. It is therefore important that the installer and the responsible technician/operator read this instruction manual before the equipment is installed and put into operation. The manual must always be available at the location where the pump or the plant is installed.

Failure to observe the safety instructions can lead to the loss of all indemnity.

In this instruction manual, safety information is distinctly labelled with particular symbols. Disregarding this information can be dangerous.



General danger to people



Warning of electrical voltage

**NOTICE!** Danger to equipment and operation

#### Qualification and training of personnel

All personnel involved with the operation, servicing, inspection and installation of the equipment must be suitably qualified for this work and must have studied the instruction manual in depth to ensure that they are sufficiently conversant with its contents. The supervision, competence and areas of responsibility of the personnel must be precisely regulated by the operator. If the personnel do not have the necessary skills, they must be instructed and trained accordingly.

#### Safety-conscious working

The safety instructions in this instruction manual, the existing national regulations regarding accident prevention, and any internal working, operating and safety regulations must be adhered to.

#### Safety instructions for the operator/user

All legal regulations, local directives and safety regulations must be adhered to.

The possibility of danger due to electrical energy must be prevented.

Leakages of dangerous (e.g. explosive, toxic, hot) substances must be discharged such that no danger to people or the environment occurs. Legal regulations must be observed.

#### Safety instructions for installation, inspection and maintenance works

As a basic principle, works may only be carried out to the equipment when it is shut down. Pumps or plant that convey harmful substances must be decontaminated.

All safety and protection components must be re-fitted and/or made operational immediately after the works have been completed. Their effectiveness must be checked before restarting, taking into account the current regulations and stipulations.

#### Unauthorised modifications, manufacture of spare parts

The equipment may only be modified or altered in agreement with the manufacturer. The use of original spare parts and accessories approved by the manufacturer is important for safety reasons. The use of other parts can result in liability for consequential damage being rescinded.

#### Unauthorised operating methods

The operational safety of the supplied equipment is only guaranteed if the equipment is used for its intended purpose. The limiting values given in the "Technical Data" section may not be exceeded under any circumstances.

#### Instructions regarding accident prevention

Before commencing servicing or maintenance works, cordon off the working area and check that the lifting gear is in perfect condition.

Never work alone. Always wear a hard hat, safety glasses and safety shoes and, if necessary, a suitable safety belt.

Before carrying out welding works or using electrical devices, check to ensure there is no danger of explosion.

People working in wastewater systems must be vaccinated against the pathogens that may be found there. For the sake of your health, be sure to pay meticulous attention to cleanliness wherever you are working.

Make sure that there are no toxic gases in the working area.

Observe the health and safety at work regulations and make

sure that a first-aid kit is to hand.

In some cases, the pump and the pumping medium may be hot and could cause burns.

For installations in areas subject to explosion hazards, special regulations apply!

## TECHNICAL DATA

Operating voltage: 230V/50Hz; 1.5W

Control voltage: 12V DC SELV (non-stabilised)

Alarm contact of the AG...: potential-free normally-open contact; maximum possible load: 230 V / 5A AC.

Housing: (h x w x d) in mm: 147 x 71 x 70

Protection category IP20

Cable AG3, AG10: H07 RN-F

Cable AGE, AGR : LIYY PVC

Operating temperature: -20°C to 50°C

Humidity: 0 to 90% RH, with no condensation

## DESCRIPTION

The AG... alarm transmitter has an integrated buzzer that emits a loud signal if the water level in the pump chambers and containers is too high or, in the case of the AGE model, if a leak is detected.

Only use the alarm transmitter in well ventilated rooms.

**NOTICE!** High humidity can cause malfunctions and permanent damage to the alarm transmitter.

If required, the device can also be equipped with a 9 V rechargeable battery, for mains-independent operation.

The AG... alarm transmitters are fitted with a potential-free telecommunication contact.

### EMC

The device is suitable for domestic/commercial use, connected to the public power supply network. If connected to an industrial power supply network within an industrial facility, where the supply is provided from a high-voltage transformer, there may be insufficient immunity to interference.

## ELECTRICAL CONNECTION



### WARNING!

Always pull the mains plug out of the socket before any work is undertaken!

The housing may be opened only by a qualified electrician!

The device may be operated only if the housing is undamaged and closed.

The device may only be connected to a socket outlet installed in accordance with regulations, located in a dry room and fused with 16 A (slow-blow) and a residual current circuit breaker (≤30 mA).

### Functional test

Lift up the float switch (with the AGE: submerge the electrode in water): The alarm should sound.

### Rechargeable battery for mains-independent alarm



### CAUTION!

Only use the 9V-NiMh battery supplied by the manufacturer! If dry-cell batteries or Lithium batteries are used there is a danger of explosion!

- Loosen the housing screws and open the housing carefully.
- Open the battery compartment in the cover. Press the connector clip into place and lay the battery in the compartment.
- Replace the small cover, making sure it clicks into place, and screw the alarm transmitter back together.

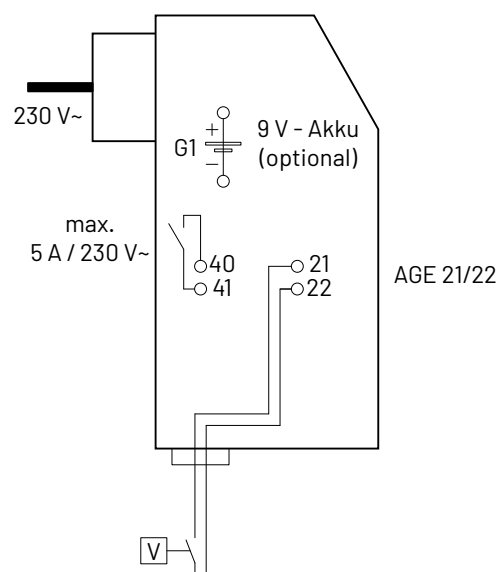
The system can operate for approximately 3 hours using the battery. Once depleted, the battery is recharged by the alarm circuit within approximately 100 hours. The service life of the rechargeable battery is 5 to 10 years. Make a note of the date that the battery was fitted and carry out regular tests to ensure that the device operates correctly when battery powered (with no mains connection).



Dispose of used or leaking batteries at the established collection points.

### Potential-free telecommunication contact only with AG...

- Loosen the housing screws and open the housing carefully.
- Feed the telecommunication cable into the housing through the seal at the bottom left and connect it to terminal 40/41. Strip the end insulation as short as possible.
- Use the free fixing clip as a strain-relief clamp to secure the cable.
- Screw the alarm transmitter back together.
- The maximum possible load for the normally-open contact is 5A / 230V~.



## INSTALLATION

### AG3, AG10

Fix the cable of the ball contact switch after approx. 35cm to the wall, to relief any strain, with the cable holder and hose clip, install the submersible ball contact switch at the desired height, by fixing it to the pressure pipe of the pump, for example. Keep the connection length as short as possible (50 to 100 mm).

### AGR

Before the special float switch can be installed, the float switch cable must be temporarily disconnected from the device.



### WARNING!

Always pull the mains plug out of the socket before any work is undertaken!

The housing may be opened only by a qualified electrician! Loosen the housing screws, open the housing carefully and disconnect the two leads of the float switch cable.

For the installation of the special float switch, fix the mounting hole in the cover of the Hebefix or in the compli 300 chamber, as shown in the appendix.

Fix the special float switch in the Hebefix cover or to the compli chamber.

Reconnect the float switch cable (at terminal 21/22) in the device and screw the alarm transmitter back together.

Functional test: Plug the alarm transmitter into the socket and lift up the float of the special float switch with your hand – the device should trigger the alarm.

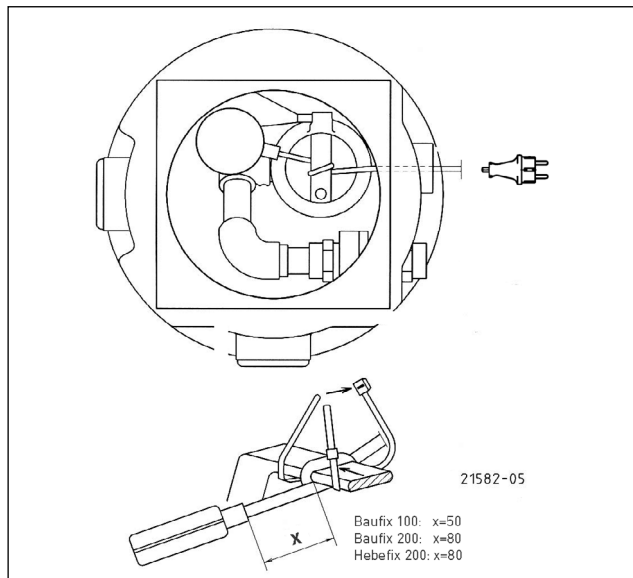
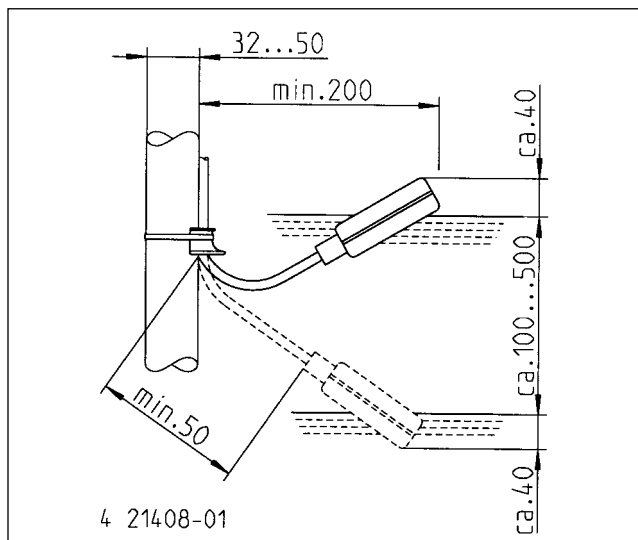
If the alarm is triggered when the float is at its lower position, the float must be taken out of its guide and turned through 180° before being replaced in the guide.

### AGE

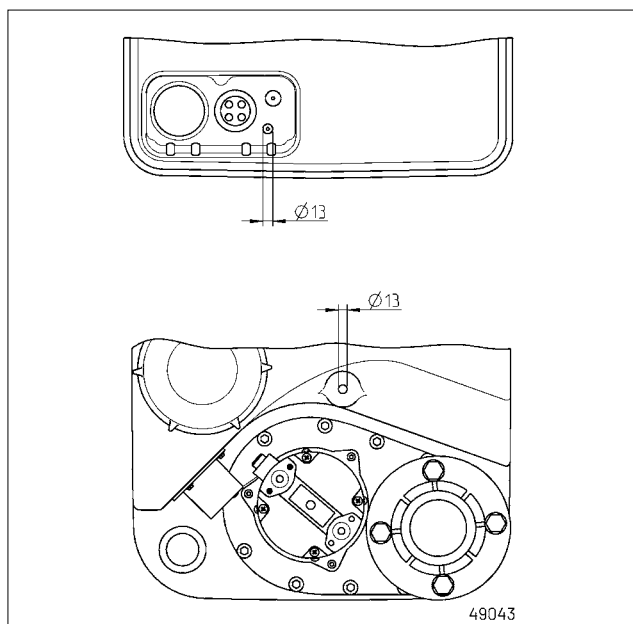
Place the electrode on the floor, as close as possible to the appliances that are to be monitored. If, for example, the electrode comes into contact with water as a result of a washing machine leak, the alarm will sound. After the alarm has been triggered, dry the electrode with a cloth.

### Installation

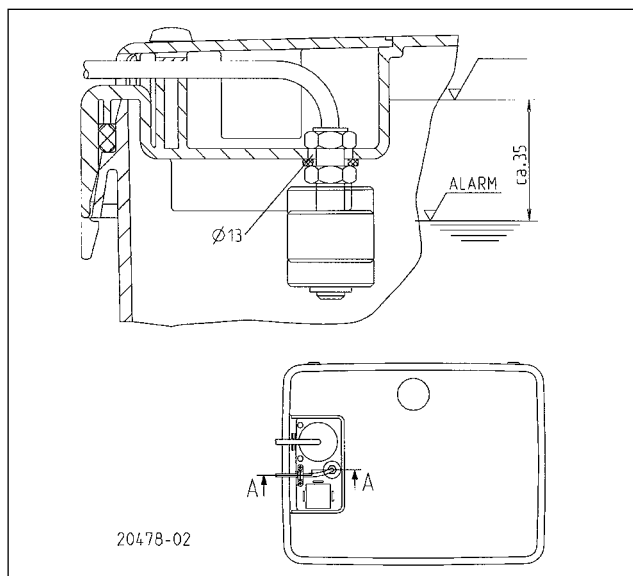
#### AG3, AG10



#### Hebefix 100, compli 300



#### Hebefix





## UKCA-Declaration of Conformity

---

### Legislation - Designated Standards

- |  |   |
|--|---|
| • Electromagnetic Compatibility Regulations 2016 (EMC)   | EN 55014-1: 2017/A11:2020, EN 55014-2: 1997/A2:2008 |
| • The Restriction of the Use of Certain Hazardous Substance in Electrical and Electronic Equipment Regulations 2012 (RoHS) |   |
| • Electrical Equipment (Safety) Regulations 2016   | EN 60335-1: 2012/A14:2019                           |

Name and address of the manufacturer: JUNG PUMPEN GmbH - Industriestr. 4-6 - 33803 Steinhagen - Germany - [www.jung-pumpen.de](http://www.jung-pumpen.de)

We hereby declare, under our sole responsibility, that the product is in accordance with the specified Legislation.

**AG3 GB** (JP50770)                      **DKG GB** (JP55612)

**AG10 GB** (JP50771)

**AGE GB** (JP50772)

**AGR GB** (JP55611)

Other normative documents:

Authorized person for technical documentation

JUNG PUMPEN - Stefan Sirges - Industriestr. 4-6 - 33804 Steinhagen

Steinhagen, 30-01-2023



Stefan Sirges, General Manager



i.V.

Pascal Kölkebeck, Sales Manager



Jung Pumpen GmbH  
Industriestr. 4-6  
33803 Steinhagen  
Deutschland  
Tel. +49 5204 170  
kd@jung-pumpen.de

Pentair Water Italy Srl  
Via Masaccio, 13  
56010 Lugnano - Pisa  
Italia  
Tel. +39 050 716 111  
info@jung-pumpen.it

Pentair Water Polska Sp. z o.o.  
ul. Plonów 21  
41-200 Sosnowiec  
Polska  
Tel. +48 32 295 1200  
info@pl.jungpumpen@pentair.com

All indicated Pentair trademarks and logos are property of Pentair. Third party registered and unregistered trademarks and logos are the property of their respective owners.  
© 2022 Pentair Jung Pumpen